

TNC 9500



Compression Cell **Series TNC 9500** CAPACITIES 50 te to 1500te



- ▶ **Stainless Steel load cell**
- ▶ **Optional Swivel Top**
- ▶ **Optional Loading Base**
- ▶ **Sealed to IP68**
- ▶ **Two Year Warranty**

 **TNC** *ELECTRONICS Ltd*

STRAIN MEASUREMENT TECHNOLOGY

Creating a pathway to your solution

TNC 9500

Technical Data

Standard load ranges	Te	50,100,200,300,400,500, 1000,1500.
Full Load output	mV/V	1.5 +/-0.5%
Excitation voltage (recommended) dc or ac	V	10
Excitation voltage (maximum) dc or ac	V	20
Safe service load	%	150
Ultimate load	%	500
Safe side load	%	100
Combined error (non-linearity & hysteresis)	%	<+/- 0.2
Non-Repeatability	%	<+/- 0.02
Output at zero load	%	<+/- 1.0%
Input resistance	ohms	700 (500-1500te 1400Ω)
Output resistance	ohms	700 +/-2
Creep after 30 minutes (20 deg C)	%	<+/- 0.05%
Operational temperature range	deg C	-20 to +80
Compensated temperature range	deg C	-10 to +40
Temperature coefficient of zero	%/C	<+/-0.005
Temperature coefficient of span	%/C	<+/-0.003
Environmental protection		IP67
Cable length standard	m	10
Insulation	G ohms	>2 at 100V.dc

NOTE: All percentages related to Full Rated Load

Electrical Connections

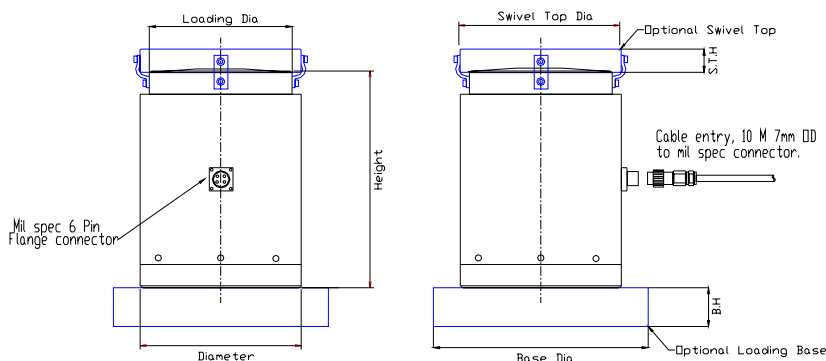
Red + input Green + output
Blue - input Yellow - output
Screen not connected to load cell

Connector Fitted (Option)

IP 68 6 Way Amphenol Connector
Pin A + input Pin E + output
Pin C - input Pin F - output

Construction

Load cell: Stainless Steel



Cell Type	Nominal Rated Load	Height	Diameter	Loading Dia	Base Diameter	B.H	Swivel Top Dia	S.T.H
Comp 50-100	100	150	100	80	150 Dia	50	100	20
Comp 200	200	180	127	110	150 Dia	50	127	30
Comp 300	300	180	150	130	200 Dia	50	150	30
Comp 400	400	180	150	136	200 Dia	50	150	38
Comp 500	500	300	203	170.5	265 Dia	50	203	50
Comp 1000	1000	425	290	250	335 Dia	75	290	50
Comp 1500	1500	490	350	300	400 Dia	100	350	75

ALL DIMENSION IN MM

TNC's policy is one of continuous development and these specifications are subject to change without notice



Creating a pathway to your solution

Unit C3 Acre Business Park, Acre Road, Berkshire RG2 0SA.
 Telephone: 0118 9314107 Facsimile: 01189 9314971
www.tncelectronics.co.uk email: sales@tncelectronics.co.uk